

# TERMINATION

## SMA

DC - 2.5 GHz  
1 Watt



MODELS: TS298M

### SPECIFICATIONS:

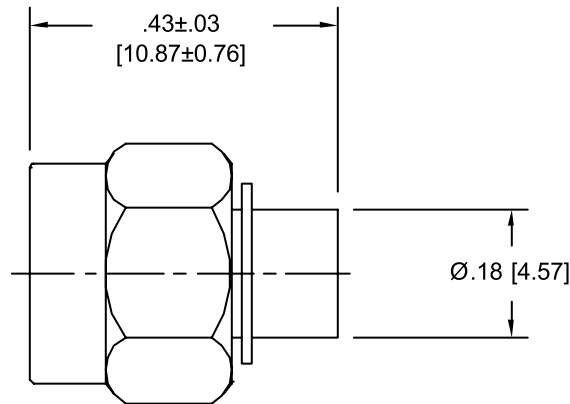
#### Electrical:

Frequency Range \_\_\_\_\_ DC - 2.5 GHz  
VSWR \_\_\_\_\_ 1.15:1 Max.  
Impedance \_\_\_\_\_ 50 Ohms  
Input Power \_\_\_\_\_ 1 Watt Avg. @ +25°C  
Derated Linearly to 10% @ +125°C  
Peak Power \_\_\_\_\_ 1 kW Max.  
(5uSec Pulse, .05% Duty Cycle)  
Temperature Coefficient \_\_\_\_\_ ± 200 ppm / °C  
Operating Temperature Range \_\_\_\_\_ -55°C to +125°C

#### Mechanical:

SMA Connector \_\_\_\_\_ Gold Plated Brass  
Mates with MIL-STD-348  
Conductor \_\_\_\_\_ Gold Plated Brass  
Coupling Nut \_\_\_\_\_ Passivated Stainless Steel

Model Number: TS298M



#### Note:

Unit Shown, and Dimensions Occur, with Coupling Nut  
Biased Fully Forward (as Installed).

Note: Dimensions in Brackets are Expressed in Millimeters and are for Reference Only.

TS298M; REV B