

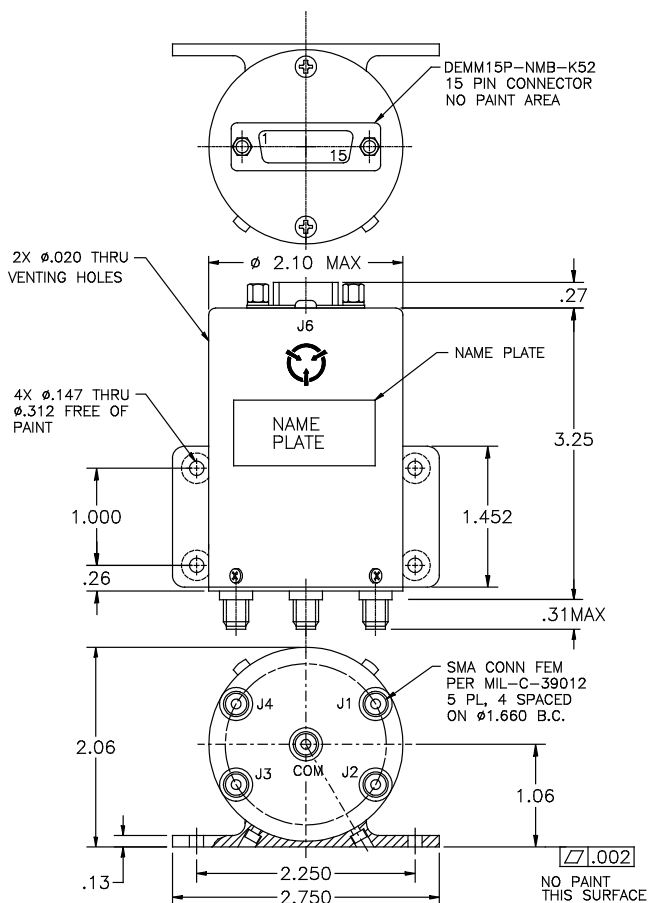
Space Flight SP4T Coaxial Switch MS4-446E004

Description

High reliability single pole 4 throw RF coaxial switch for space applications. The operating frequency is from 300 MHz to 2500 MHz with input power of 5 Watts CW. It operates at 12.0 Vdc to 15.0 Vdc at extreme temperature of -40°C to +85°C. The switch is latching type and equipped with suppression diodes, telemetry circuitry and radiation shielding of 300 KRad minimum.

Features

- Multiple output RF transmission lines
- Robust design
- Reliable



Specifications

Frequency:	300 MHz to 2500 MHz
Insertion loss:	0.20 dB maximum
VSWR:	1.20:1 maximum
Isolation:	80 dB minimum
Switching time:	40 milliseconds maximum
Switching current:	330 milliamperes at 15 Vdc at +25°C

Applications

- Satellite communications
- Test equipments use in the vacuum environmental